

## Proud to Serve the Los Altos Community

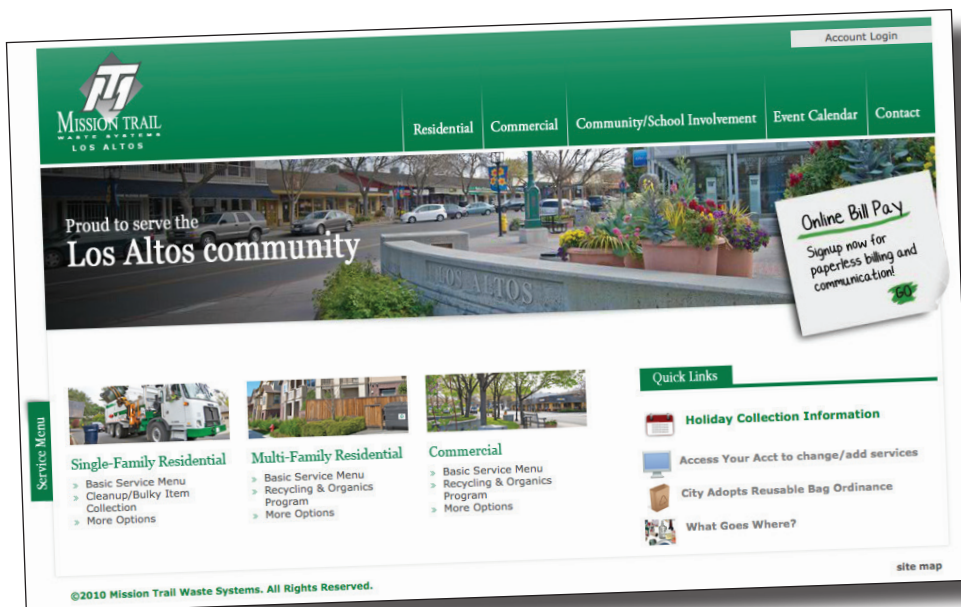
# Mattress Disposal



More than 50,000 mattresses end up in U.S. landfills every day, make sure your isn't one of them by contacting Bye Bye Mattress. Bye Bye Mattress is a mattress recycling program operating in California. They turn old mattresses into biomass fuel, carpet padding, oil filters, home insulation garden mulch and new steel. Contact them to learn more at 1-855-700-9973 or at [byebyemattress.com](http://byebyemattress.com).

## Utilize Your Online Account to do the Following:

- Save paper & sign up for paperless billing
- Save paper, postage & checks by making a payment online
- Update Automatic Payment methods
- Service Request (start/stop service, report a problem, request on-call bulky clean up, etc.)
- View Service History
- Sign up for Auto-Pay



### Los Altos Wine Walk Sept. 16th



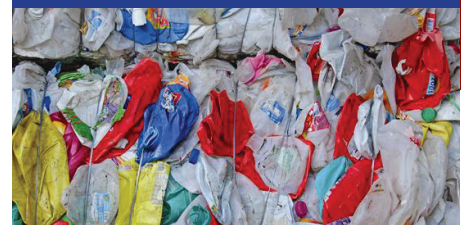
### Corvette Spectacular Sept. 18th 8am-4:30pm Main Street, Los Altos

### Los Altos Farmers Market Every Thursday 4-8pm Until Sept. 29th Downtown Los Altos

## Did you know?

### Recycling one ton of plastic:

- Saves 5,774 kWh energy
- Saves 16.3 barrels (685 gallons) of oil
- Saves 98 million BTUs of energy
- Saves 30 cubic yards of landfill space



# Thank you!

Mission Trail would like to thank all of you that are reducing, reusing and recycling as much you can. We appreciate all of your efforts!

## Contact us:

Location: 1060 Richard Ave.,  
Santa Clara, CA 95050

Office Hours: 8am-5pm,  
Monday-Friday  
Closed on Thanksgiving,  
Christmas and New Year's Day.

Phone: 650-473-1400

Web: [www.MissionTrail.com](http://www.MissionTrail.com)

Printed on recycled paper using soy/vegetable-based inks



1060 Richard Avenue  
Santa Clara, CA 95050  
650-473-1400  
[www.MissionTrail.com](http://www.MissionTrail.com)

*Pick up schedule will remain  
the same for Labor Day*

## Service Reminders

- ☒ Make sure the area around your container is clear.
- ☒ Close your container to keep the rain, bugs, and birds out.
- ☒ Make sure all cardboard is flattened and/or cut to maximize space in your Recyclables bin.
- ☒ Place all shredded paper in a paper bag or box before placing in your Recyclables bin.

